

Register now



1800 965 250
info@livenoarlunga.com.au
livenoarlunga.com.au

Nurlo Release
House & Land



Artist's impression

Whilst all care has been taken in the preparation of this material, no responsibility is taken for errors or omissions and details may be subject to change. Intending purchasers should not rely on statements or representations and are advised to make their own enquiries to satisfy themselves in all respects. All allotment dimensions are indicative only. Artwork, images, and plans are impressions only and are not to be relied upon as a definitive reference. Prices are subject to change without notice. The Noarlunga development intends by this statement to exclude liability for all information contained herein. RLA 316352. Correct as at June 2025.



Noarlunga

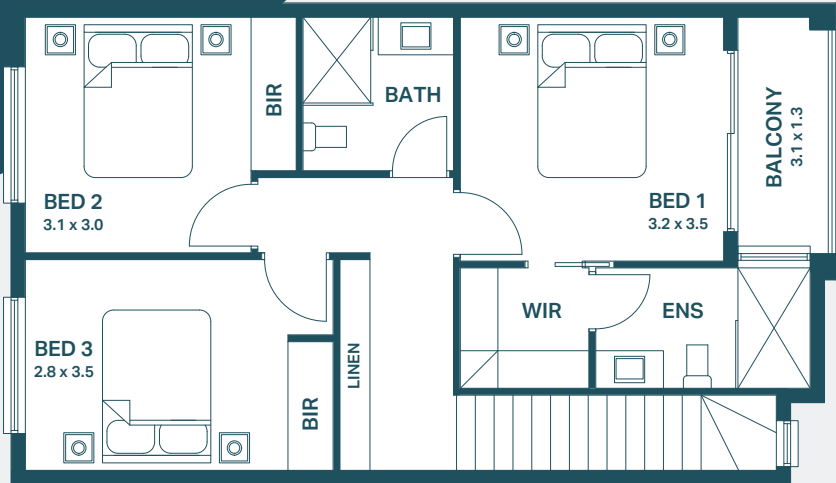
Saltbush
Lot 110

Saltbush

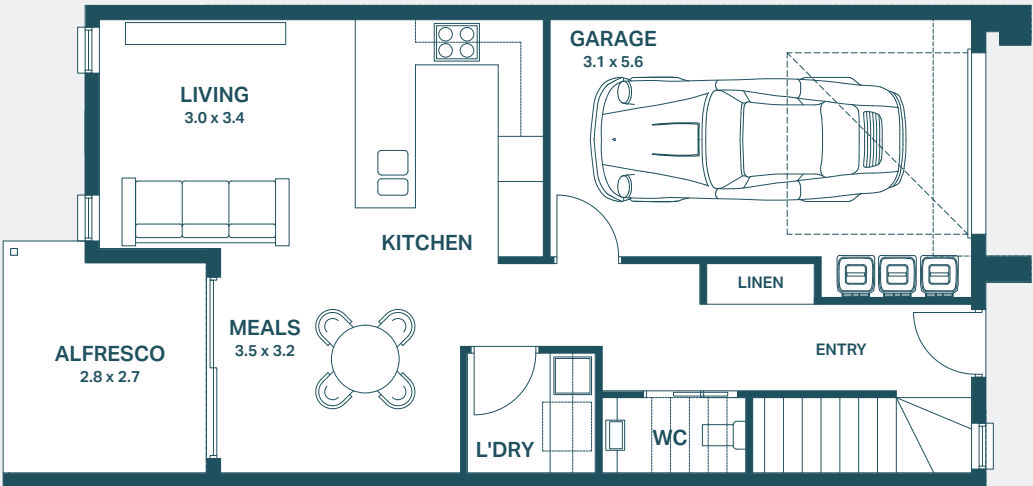
Lot 110

Key Features

- Spacious open plan kitchen, living and dining with access to alfresco area
- Ample storage throughout including linen cupboards on both floors
- Large main bedroom with balcony, walk in robe and ensuite
- Second and third bedrooms with robes
- 2.7m high ceilings throughout
- Solar included
- Choice of colour schemes, selections and upgrades available



First Floor



Ground Floor



Area Size

Ground Floor	50.6m ²
First Floor	64.8m ²
Garage	21.8m ²
Balcony	4.3m ²
Alfresco	8.3m ²
Total	149.8m²

Allotment

