


 3 |  2 |  2 |  1

Wirra Release

House & Land

Artist impression

Noarlunga

Live life your way

Lots 196, 201, 202
Warri Lane

This smartly designed two-storey, three-bedroom home puts everyday convenience front and centre.

With off-street space for a second car, entry is off Warri Lane through a sheltered porch or directly from the garage. The garage leads to a cozy study nook, the European laundry and the downstairs bathroom with a separate full-sized bath. You'll also find two of the bedrooms on this floor, each with a built-in robe and windows facing a rear courtyard.

Upstairs you'll find the third bedroom, also with a built-in robe, and second bathroom – along with the free-flowing living, dining and kitchen area, which leads out to a generously proportioned balcony overlooking one of Noarlunga's green spaces.

For a young family ready to spend less time on upkeep and more time enjoying Noarlunga, this home is a perfect fit.

Lots 196, 201, 202

Key Features

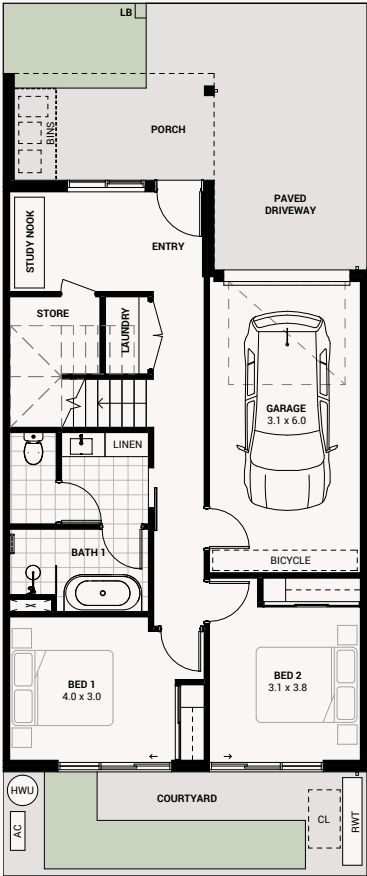
- Built-in robes to all bedrooms
- Black and stainless steel appliances
- Balcony that overlooks reserve
- Custom-designed joinery throughout
- Wall-mounted split-system air conditioning to living room
- Timber laminate flooring and plush carpets in bedrooms
- Designated study nook
- Off-street parking for second vehicle
- Solar included
- Choice of colour schemes, selections and upgrades available

Area Size

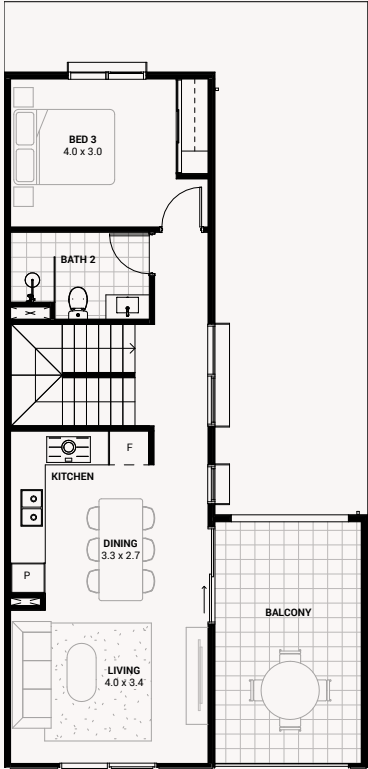
| | |
|------------------|---------------------------|
| Ground Living | 65.4m ² |
| Upper Living | 62.6m ² |
| Porch | 9.6m ² |
| Balcony | 16.6m ² |
| Garage | 20.3m ² |
| Total | 174.5m² |
| Land size | 135m² |



WARRI LANE



GROUND FLOOR



FIRST FLOOR

Floorplan and render are of Lot 196



1800 965 250

info@livenoarlunga.com.au
livenoarlunga.com.au

BUILT BY

harnest

A COMMUNITY BY

RenewalSA



Government of
South Australia

Whilst all care has been taken in the preparation of this material, no responsibility is taken for errors or omissions and details may be subject to change. Intending purchasers should not rely on statements or representations and are advised to make their own enquiries to satisfy themselves in all respects. All allotment dimensions are indicative only. Artwork, images, and plans are impressions only and are not to be relied upon as a definitive reference. Prices are subject to change without notice. The Noarlunga development intends by this statement to exclude liability for all information contained herein. RLA 316352. Correct as at December 2025.