

 3 |  2.5 |  1

## Wirra Release

### House & Land



# Noarlunga

Live life your way

**Lots 180, 191**  
Norlongga Boulevard

Sitting on a highly desirable corner allotment, this thoughtfully arranged two-storey home is designed for ease, comfort and contemporary living.

Entry is through the sheltered front porch, which opens to the light filled, free-flowing living and dining area. The kitchen includes an island bench, a generous walk-in pantry and sliding doors opening to the garden and the street. When entering the home from the garage, you'll find the downstairs powder room and well-proportioned laundry.

Upstairs, each bedroom comes complete with built-in robes, while the master bedroom features an elegant ensuite and western-facing balcony to enjoy the sunsets. On this floor you'll also find the bathroom with full-sized bath.

This is a home that provides everything a family needs to be able to enjoy all that living in Noarlunga offers.

# Lot 180

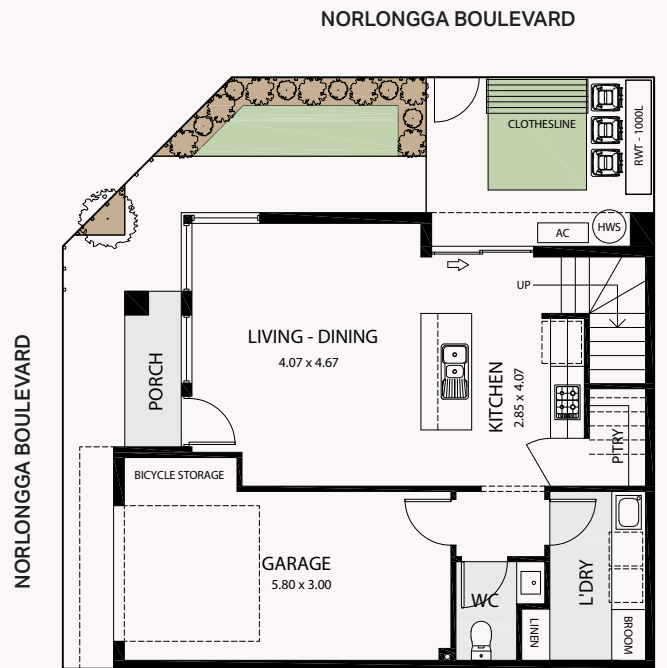
# Lot 191

## Key Features

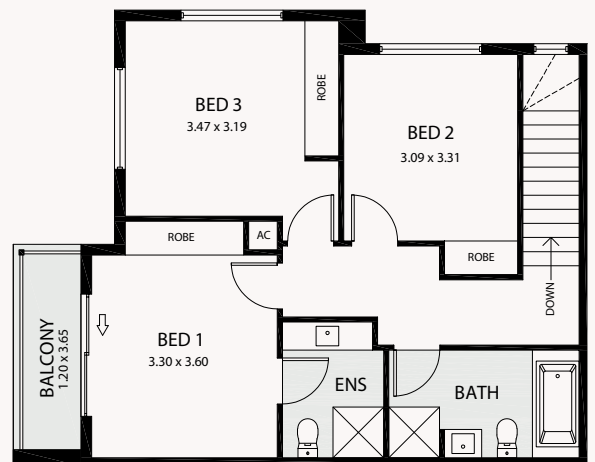
- Prime street corner allotment
- Colorbond fencing, clothesline and letterbox
- Black and stainless steel appliances
- Custom-designed joinery throughout
- Wall-mounted split-system air conditioning to living room
- Timber laminate flooring and plush carpets in bedrooms
- Built in robes to all bedrooms
- Private balcony off the master bedroom
- Solar included
- Choice of colour schemes, selections and upgrades available

## Area Size

Ground Living	49.19m <sup>2</sup>
Upper Living	68.03m <sup>2</sup>
Porch	2.76m <sup>2</sup>
Balcony	4.72m <sup>2</sup>
Garage	21.20m <sup>2</sup>
<b>Total</b>	<b>145.90m<sup>2</sup></b>
<b>Land size</b>	<b>106m<sup>2</sup></b>



GROUND FLOOR



FIRST FLOOR

Floorplan and render are of Lot 180



1800 965 250

info@livenoarlunga.com.au  
livenoarlunga.com.au

BUILT BY



A COMMUNITY BY

RenewalSA



Government of  
South Australia

Whilst all care has been taken in the preparation of this material, no responsibility is taken for errors or omissions and details may be subject to change. Intending purchasers should not rely on statements or representations and are advised to make their own enquiries to satisfy themselves in all respects. All allotment dimensions are indicative only. Artwork, images, and plans are impressions only and are not to be relied upon as a definitive reference. Prices are subject to change without notice. The Noarlunga development intends by this statement to exclude liability for all information contained herein. RLA 316352. Correct as at December 2025.