

2 | 2 | 1 | 1

Wirra Release

House & Land



Noarlunga

Live life your way

Lot 193
Norlongga Boulevard

Sitting on a highly desirable corner allotment, this thoughtfully arranged two-storey home is designed for ease, comfort and contemporary living.

Entry is through the sheltered front porch or directly from the garage, which opens to the study space, the European laundry and the downstairs bedroom, complete with built-in robe, linen cupboard and elegant ensuite.

Upstairs is all about entertaining. A spacious, light-filled open-plan living, dining and kitchen area flows out to an alfresco balcony with a western aspect to enjoy the sunsets, while overlooking one of Noarlunga's reserves. This level also includes a second bedroom with built-in robe, a separate bathroom and a guest powder room.

This is a home is a great match for those longing for low-maintenance living and the freedom to enjoy all that Noarlunga has to offer.

Lot 193

Key Features

- Desirable street corner allotment
- Built-in robes to both bedrooms
- Black and stainless steel appliances
- Custom-designed joinery throughout
- Wall-mounted split-system air conditioning to living room
- Timber laminate flooring and plush carpets in bedrooms
- Designated study space
- Balcony that overlooks reserve
- Solar included
- Choice of colour schemes, selections and upgrades available

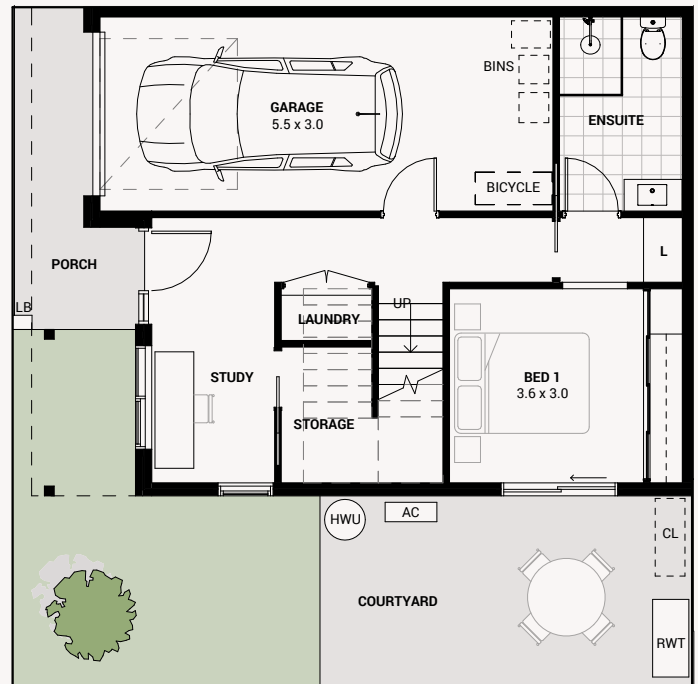
Area Size

Ground Living	44.6m ²
Upper Living	64.4m ²
Porch	6.7m ²
Balcony	12.5m ²
Garage	23.0m ²
Total	151.2m²
Land size	110m²



NORLONGGA BOULEVARD

WARRI LANE



GROUND FLOOR



FIRST FLOOR



1800 965 250

info@livenoarlunga.com.au
livenoarlunga.com.au

BUILT BY

harnest

A COMMUNITY BY

RenewalSA



Government of
South Australia

Whilst all care has been taken in the preparation of this material, no responsibility is taken for errors or omissions and details may be subject to change. Intending purchasers should not rely on statements or representations and are advised to make their own enquiries to satisfy themselves in all respects. All allotment dimensions are indicative only. Artwork, images, and plans are impressions only and are not to be relied upon as a definitive reference. Prices are subject to change without notice. The Noarlunga development intends by this statement to exclude liability for all information contained herein. RLA 316352. Correct as at December 2025.