

The Brook

🛏️ 2 | 🚿 2 | 🚗 1

Kauwi Release

House & Land



Noarlunga

Live life your way

Lot 156 Kauwi Ave

Lot 157 Norlongga Blvd

By making the most of its dual frontage, The Brook design allows sunshine to enter the home from multiple directions, creating a home that feels expansive, vibrant and uplifting.

The ground floor handles the essentials, with a dedicated laundry and secure internal garage access. Tucked away aside the main bathroom is a well-proportioned bedroom offering privacy, ideal for guests or a quiet home office.

Upstairs, the design is all about maximising space and natural light. A sleek, linear kitchen runs the full length of the room, keeping the living and dining areas open and airy. It's a layout that naturally spills out onto the private balcony, while the master suite, complete with built-in robe and ensuite, shares this elevated level.

The Brook is perfect for those seeking low-maintenance living and the freedom to enjoy Noarlunga's natural wonders.

Lots 156, 157

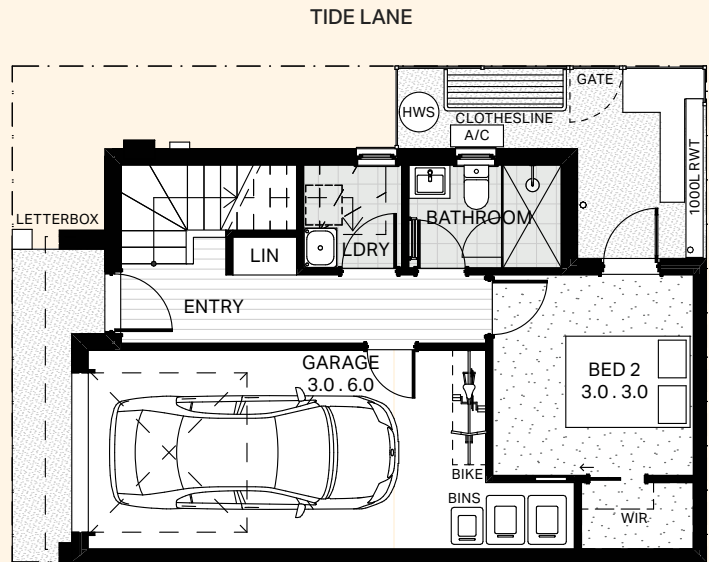
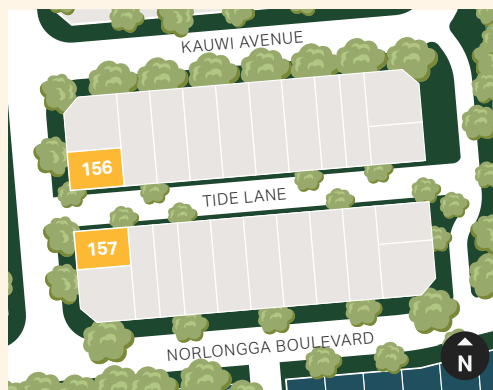
Kauwi Release | House & Land

Key Features

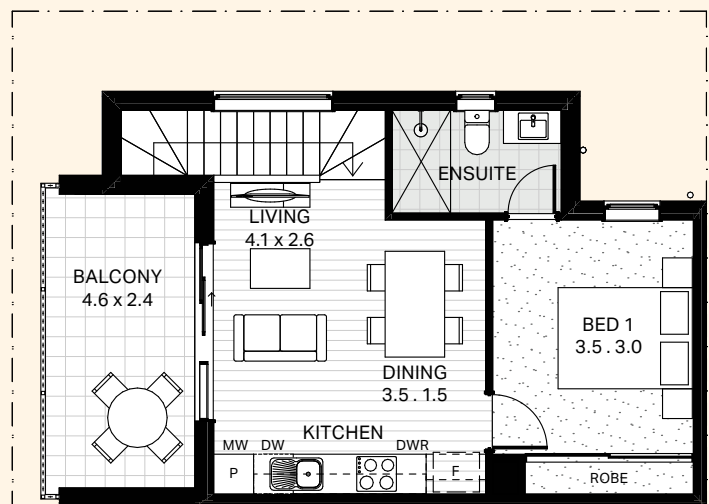
- Generous balcony off the main living room
- Timber laminate flooring to living areas and plush carpets
- Custom-designed joinery throughout
- Black and stainless appliances
- Wall-mounted split-system air conditioning to the living room
- Solar included
- Electric pump hot water system
- Automatic panel-lift garage door
- Choice of colour schemes, selections and upgrades available

Area Size

| | |
|------------------|----------------------------|
| Ground Living | 33.49m ² |
| Upper Living | 46.82m ² |
| Porch | 2.63m ² |
| Balcony | 10.74m ² |
| Garage | 21.90m ² |
| Total | 115.58m² |
| Land size | 79m² |



GROUND FLOOR



FIRST FLOOR

Floorplan and render are of Lot 157



1800 965 250

info@livenoarlunga.com.au

livenoarlunga.com.au

BUILT BY



A COMMUNITY BY

Renewal SA



Government of South Australia

Whilst all care has been taken in the preparation of this material, no responsibility is taken for errors or omissions and details may be subject to change. Intending purchasers should not rely on statements or representations and are advised to make their own enquiries to satisfy themselves in all respects. All allotment dimensions are indicative only. Artwork, images, and plans are impressions only and are not to be relied upon as a definitive reference. Prices are subject to change without notice. The Noarlunga development intends by this statement to exclude liability for all information contained herein. RLA 316352. Correct as at February 2026.