

The Surf

🛏️ 2 | 🚿 2 | 🚗 1

Kauwi Release

House & Land



Noarlunga

Live life your way

Lots 147, 148 Kauwi Ave

The Surf design delivers a considered balance of light, privacy and low-maintenance living.

A secluded second bedroom is located at the front of the home, perfect for guests, a room mate, or a quiet home studio, alongside the main bathroom and a generous laundry. Internal entry from the single garage adds everyday ease and shelter from the elements.

Upstairs, the primary living zone welcomes natural light from the private balcony, flowing through the living and dining area into the designer kitchen. It's a space made for sunset drinks and quiet dinners. The master bedroom, complete with a walk-in robe and private ensuite, is also on this level.

Balancing convenience and comfort, The Surf offers a stylish, low-maintenance lifestyle in the heart of Noarlunga's natural wonders..

Lots 147, 148

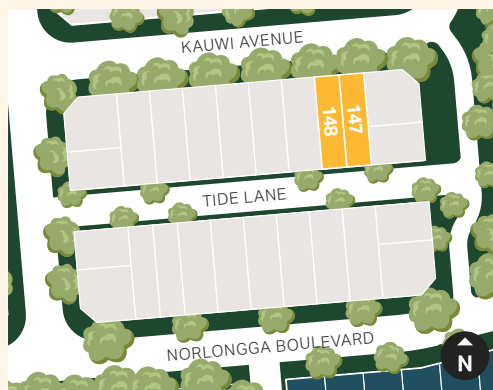
Kauwi Release | House & Land

Key Features

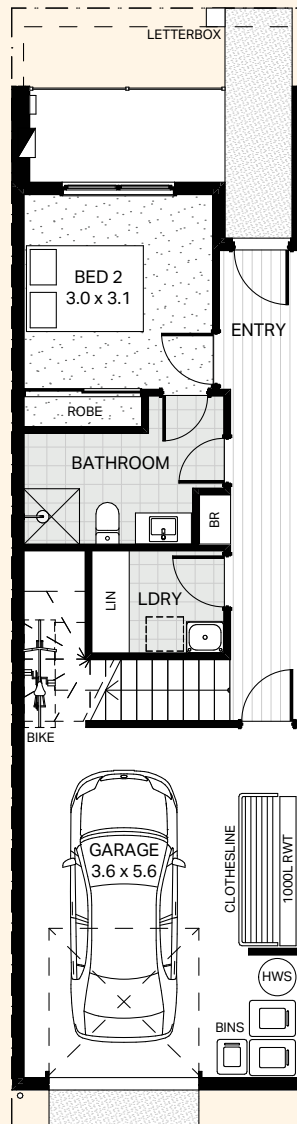
- Private balcony flowing from the main living area
- Master bedroom with walk-in robe and ensuite
- Second bedroom ideal for guests or a home studio
- Timber laminate flooring to living areas and plush carpets in bedrooms
- Custom-designed joinery throughout
- Black and stainless steel appliances
- Wall-mounted split-system air conditioning to the living room
- Solar included
- Electric heat pump hot water system
- Automatic panel-lift garage door with convenient lane access
- External letterbox
- Choice of colour schemes, selections and upgrades available

Area Size

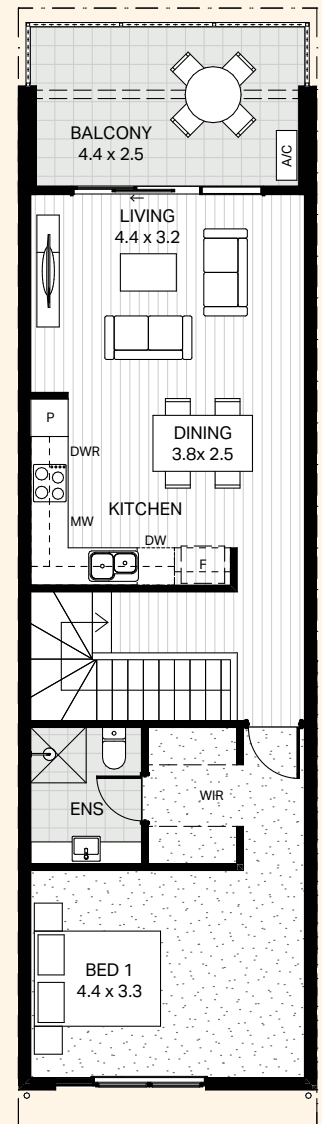
Ground Living	40.81m ²
Upper Living	69.77m ²
Balcony	11.95m ²
Garage	28.03m ²
Total	150.56m²
Land size	86m²



TIDE LANE



GROUND FLOOR



FIRST FLOOR

Floorplan and render are of Lot 147



1800 965 250

info@livenoarlunga.com.au

livenoarlunga.com.au

BUILT BY



A COMMUNITY BY

RenewalSA



Government of South Australia

Whilst all care has been taken in the preparation of this material, no responsibility is taken for errors or omissions and details may be subject to change. Intending purchasers should not rely on statements or representations and are advised to make their own enquiries to satisfy themselves in all respects. All allotment dimensions are indicative only. Artwork, images, and plans are impressions only and are not to be relied upon as a definitive reference. Prices are subject to change without notice. The Noarlunga development intends by this statement to exclude liability for all information contained herein. RLA 316352. Correct as at February 2026.