

The Cove

3 | 2 | 2

Kauwi Release

House & Land



Noarlunga

Live life your way

Lot 149 Kauwi Ave

Lots 164, 166 Norlongga Blvd

A sanctuary of natural light and air, The Cove is designed for those seeking low-maintenance living and the freedom to enjoy the coastal charm and natural wonders surrounding Noarlunga.

The ground level focuses on function and easy living, with the master bedroom offering a spacious walk-in robe and private suite for a quiet retreat from the main family hub upstairs. A double garage provides secure internal access, alongside a European laundry and convenient powder room for guests.

Upstairs, an expansive open-plan living and dining area flows to a spacious private balcony, all connected to the gourmet kitchen with a walk-in pantry. Two generously sized bedrooms and a central bathroom complete this level.

Nestled in Noarlunga, you are minutes from Christies Beach, Colonnades and McLaren Vale.

Lots 149, 164, 166

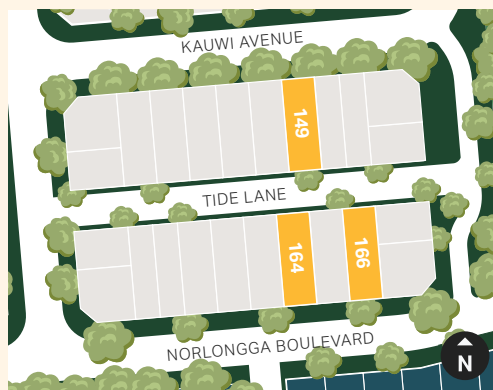
Kauwi Release | House & Land

Key Features

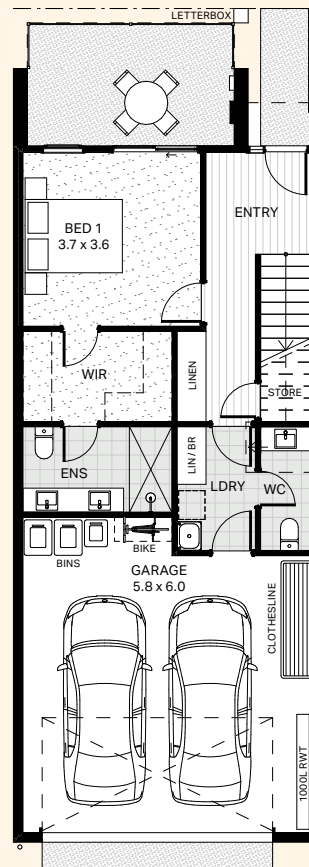
- Ground-floor master suite with walk-in robe and ensuite
- Timber laminate flooring to living areas and plush carpets to bedrooms
- Custom-designed joinery throughout
- Black and stainless steel appliances
- Wall-mounted split-system air conditioning to the living room
- Solar included
- Electric heat pump hot water system
- Automatic panel-lift garage door with convenient rear lane access
- External letterbox
- Choice of colour schemes, selections and upgrades available

Area Size

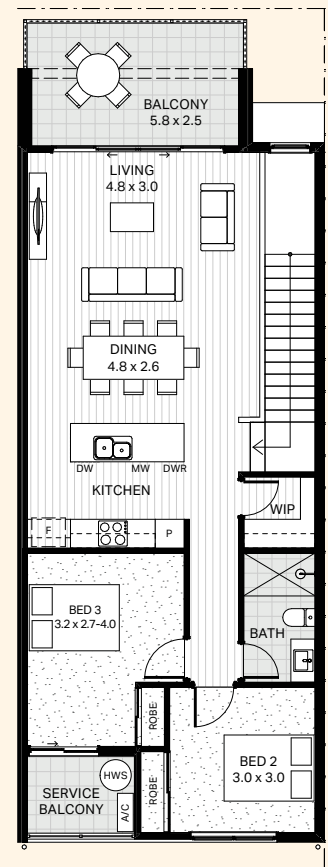
Ground Living	52.03m ²
Upper Living	88.52m ²
Balcony	12.23m ²
Service Balcony	4.38m ²
Garage	40.99m ²
Total	198.15m²
Land size	115m²



TIDE LANE



GROUND FLOOR



FIRST FLOOR

Floorplan and render are of Lot 149



1800 965 250

info@livenoarlunga.com.au
livenoarlunga.com.au

BUILT BY



A COMMUNITY BY

RenewalSA



Government of South Australia

Whilst all care has been taken in the preparation of this material, no responsibility is taken for errors or omissions and details may be subject to change. Intending purchasers should not rely on statements or representations and are advised to make their own enquiries to satisfy themselves in all respects. All allotment dimensions are indicative only. Artwork, images, and plans are impressions only and are not to be relied upon as a definitive reference. Prices are subject to change without notice. The Noarlunga development intends by this statement to exclude liability for all information contained herein. RLA 316352. Correct as at February 2026.