

The Bay

🛏️ 2 | 🚿 2 | 🚗 1 | 📖 1

Kauwi Release

House & Land



Noarlunga

Live life your way

Lot 145 Kauwi Ave

Lot 168 Norlongga Blvd

Occupying a highly-desirable corner block, The Bay is designed for those seeking a quiet retreat to recharge, paired with a sun-soaked upper level made for entertaining.

On the ground floor, the master suite features a private ensuite and walk-in robe, while a dedicated study creates an ideal work-from-home zone away from the activity upstairs. A streamlined laundry opens to an external clothesline area for everyday convenience.

Upstairs, the open-plan kitchen, dining and lounge flow to a generous private balcony, with a second bedroom and central bathroom adding comfort and flexibility.

Making the most of its dual frontage, The Bay celebrates both peaceful mornings in the garden and vibrant evenings on the balcony, right in the heart of Noarlunga's natural beauty.

Lots 145, 168

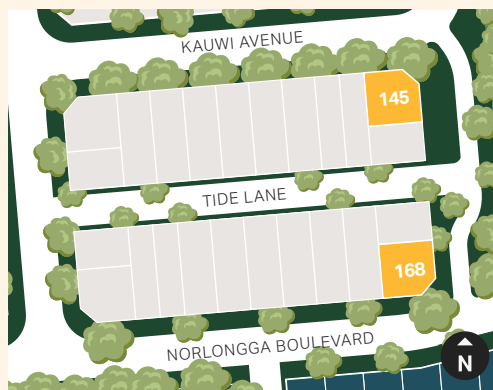
Kauwi Release | House & Land

Key Features

- Private balcony for upper-level entertaining
- Dedicated study area
- Master suite with walk-in robe and ensuite
- Timber laminate flooring to living areas and plush carpets in bedroom
- Custom-designed joinery throughout
- Black and stainless steel appliances
- Wall-mounted split-system air conditioning to the living room
- Solar included
- Electric heat pump hot water system
- Automatic panel-lift garage door
- Choice of colour schemes, selections and upgrades available

Area Size

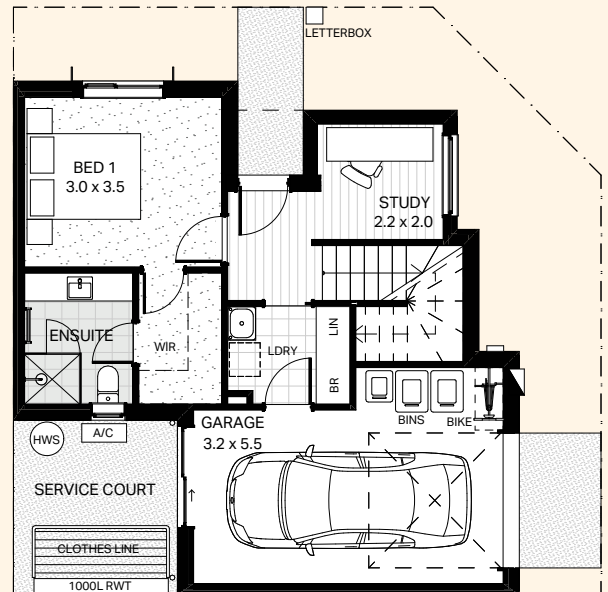
Ground Living	43.34m ²
Upper Living	57.15m ²
Porch	1.36m ²
Balcony	10.15m ²
Garage	22.65m ²
Total	134.65m²
Land size	106m²



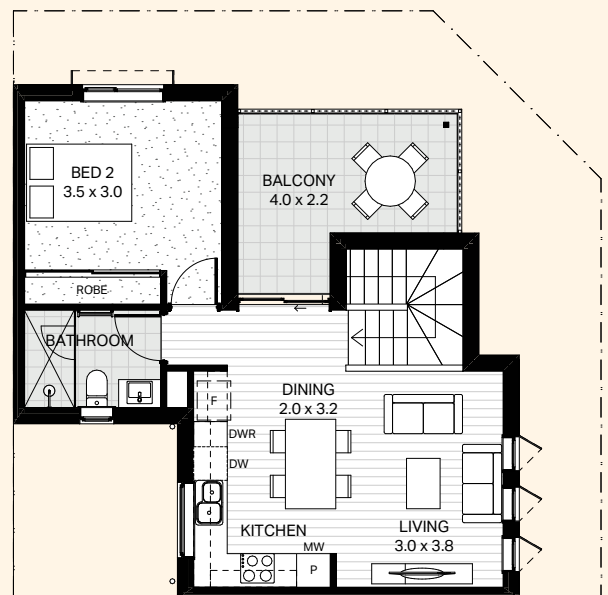
1800 965 250

info@livenoarlunga.com.au
livenoarlunga.com.au

KAUWI AVENUE



GROUND FLOOR



FIRST FLOOR

Floorplan and render are of Lot 145

BUILT BY



A COMMUNITY BY

Renewal SA



Government of South Australia

Whilst all care has been taken in the preparation of this material, no responsibility is taken for errors or omissions and details may be subject to change. Intending purchasers should not rely on statements or representations and are advised to make their own enquiries to satisfy themselves in all respects. All allotment dimensions are indicative only. Artwork, images, and plans are impressions only and are not to be relied upon as a definitive reference. Prices are subject to change without notice. The Noarlunga development intends by this statement to exclude liability for all information contained herein. RLA 316352. Correct as at February 2026.